

Structural change of Japanese economy

~ Long term projection by JIDEA6 ~

Y. SASAI

contents

- 1. Long term projection of JIDEA6
- 2. Structural change of Japanese Industry
 - Output
 - Employment
 - Labour productivity
- 3. Conclusion

Result of running JIDEA6

- JAPAN INTERINDUSTRY DYNAMIC ECONOMETRIC ANALYSIS (JIDEA)
- Version 6.0

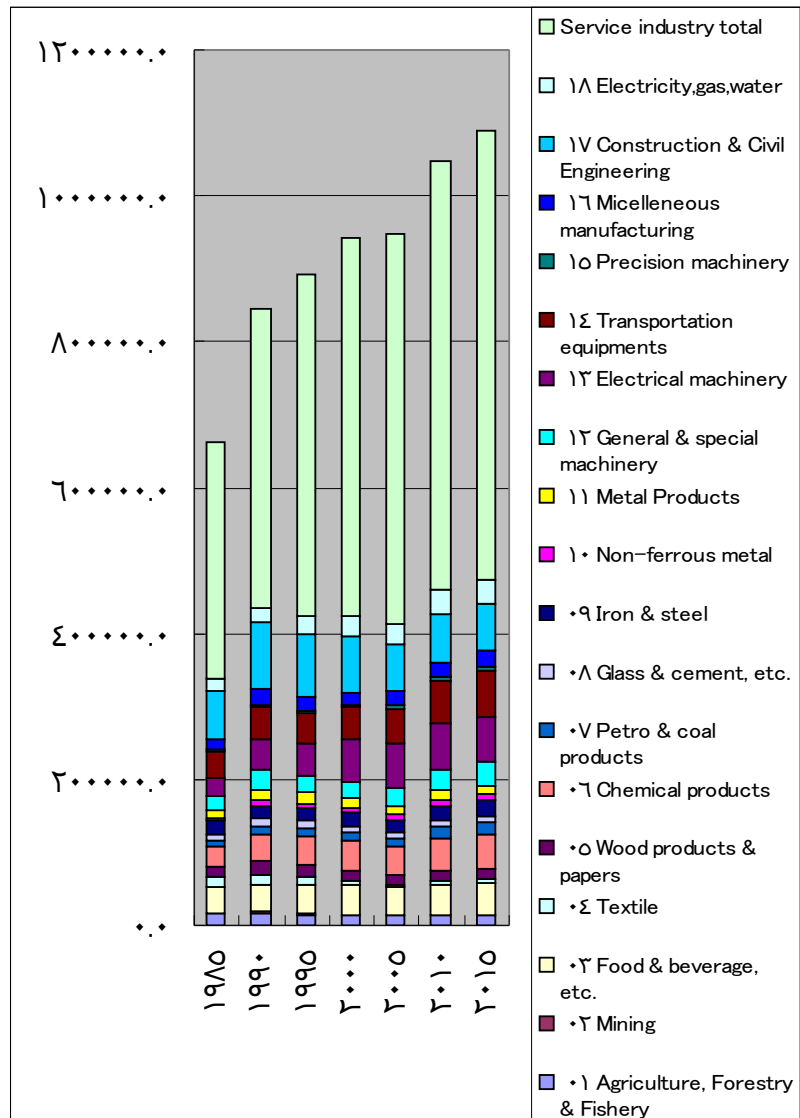
- ITERATION COUNTS

•	Yr	M	Q	P	GDPR	Cons	Inv	Exp	Imp	Emp	Wage/E	Infl	OUTR	GrGDPr
•	5	2			522.5	387.6	130.4	73.2	68.6	63560	4.034	0.10	953.1	2.26
•	6	33	4	2	536.1	395.0	132.4	78.5	69.8	64036	3.985	-3.35	983.5	2.59
•	7	24	4	2	543.4	401.4	133.3	80.7	72.0	64189	3.950	-1.47	998.4	1.37
•	8	9	4	5	553.6	408.6	136.2	82.6	73.8	63010	3.929	-2.84	1018.8	1.86
•	9	15	9	7	564.1	416.7	138.6	85.3	76.5	63034	3.903	-1.30	1040.0	1.91
•	10	17	9	6	570.4	421.6	139.4	88.0	78.5	63418	3.869	-1.05	1054.0	1.12
•	11	35	9	6	577.9	426.2	142.2	90.3	80.8	63888	3.852	-0.67	1070.1	1.32
•	12	12	4	6	580.1	431.5	139.0	92.0	82.5	64377	3.860	0.22	1074.6	0.37
•	13	76	4	7	587.2	431.5	146.9	94.1	85.4	65276	3.875	0.61	1091.0	1.22
•	14	3	106		592.0	441.8	138.6	97.8	86.2	65992	3.853	-0.48	1100.1	0.83
•	15	11	4	6	593.4	442.9	138.9	99.4	87.7	65745	3.847	-0.44	1104.8	0.24
•	The JIDEA model simulation is done. Use Vam or Compare to view results.													

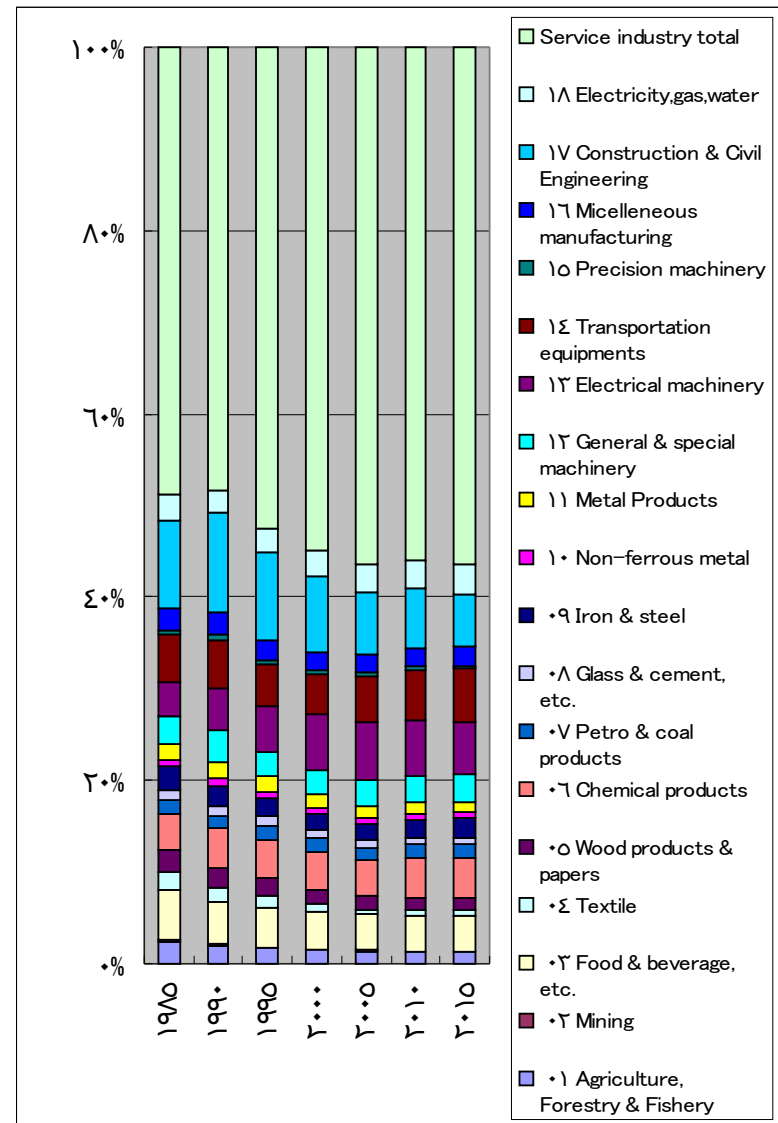
- Total execution time: 43 seconds

Output by sector

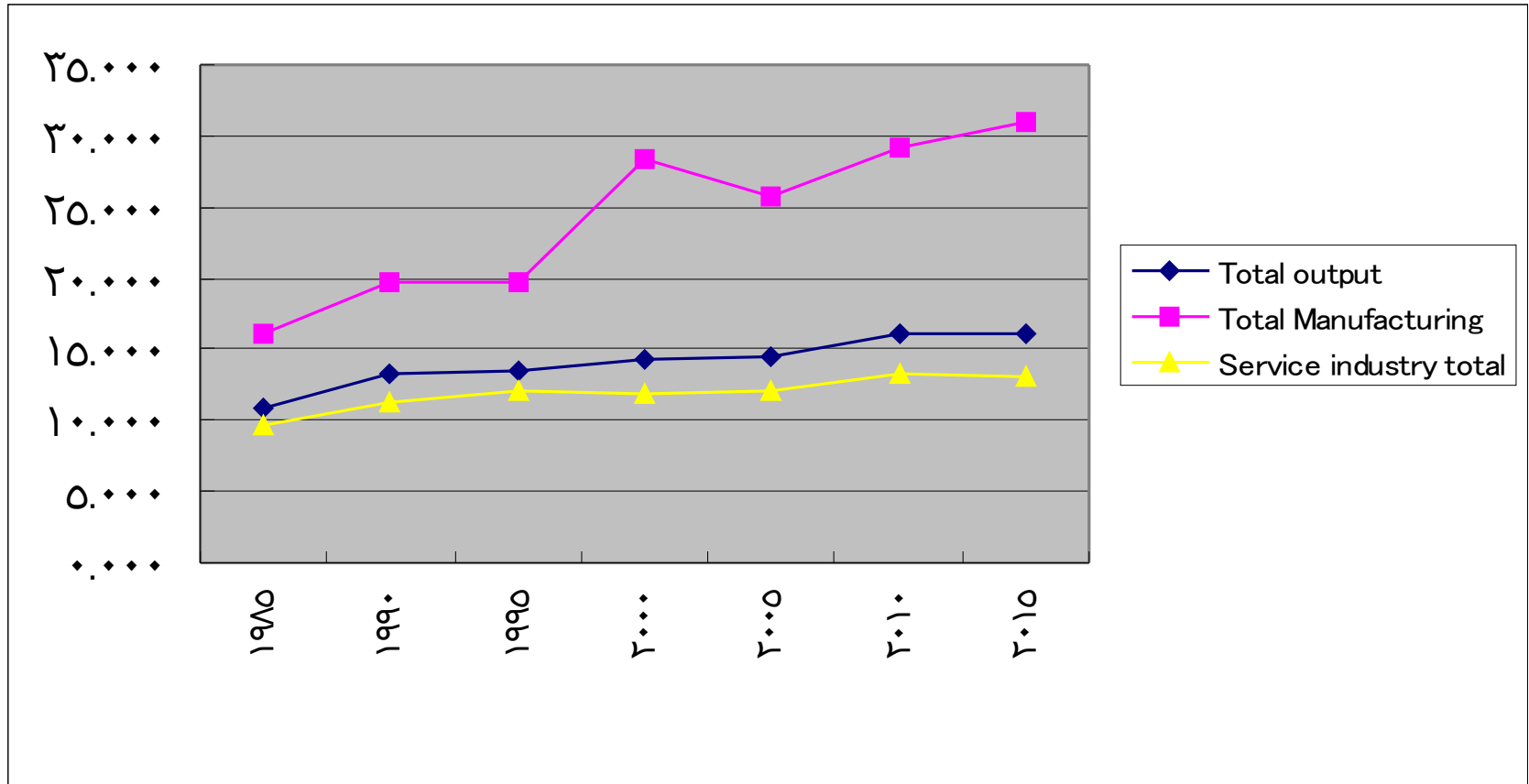
Trillion of 2000 Yen



Ratio %



Labour productivity



Productivity by industry

